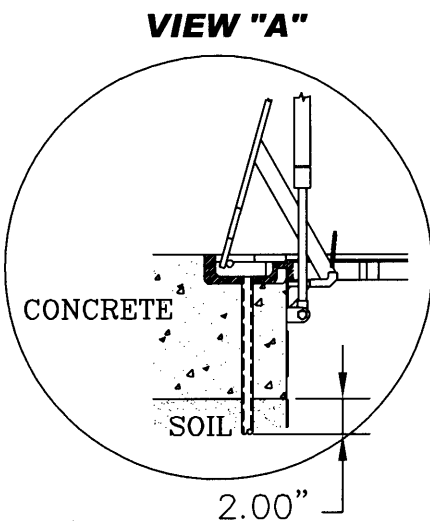


## Installation & Maintenance Instructions

Before installing, use caution when lifting the cover on the EZ-Lift manhole. Due to the strength of the gas shock, it can bend the ring and skirt if the lid is not held down and cause damage to the manhole. CNI recommends using a 12" length by 3/4" dia. plastic pipe (included) to be jammed into the hole, in the hinge area. This hole is used to drain the water that accumulates in this area (View "A") which can cause rust. To keep water from entering this area, the manhole can be laid in concrete 1/4" to 1/2" or high enough to prevent water from puddling.



**NOTE:**

The drainage must be used to prevent water accumulation in the hinge area. See view {A}.

The drainage pipe needs to be a min. of 2" past the concrete slab as shown above.

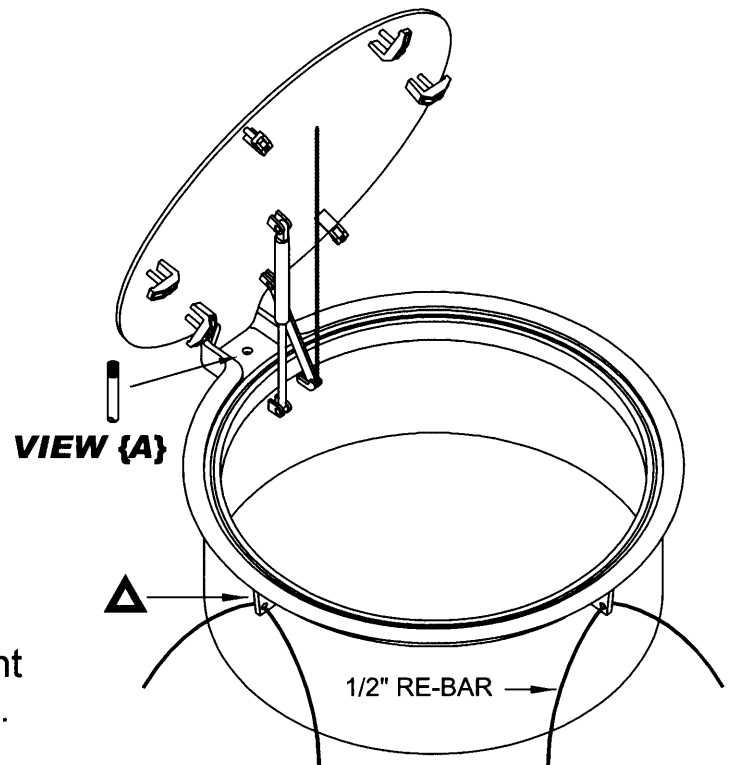
**CAM-LOK MAINTENANCE:**

Everytime the cover is opened put Anti-Seize compound on the cam-lok bolts to prevent sticking and allow easy movement.

**HINGE MAINTENANCE:**

Once a year, remove the mustache-(A) and put Anti-Seize compound on the pin-(B) to prevent sticking and allow easy movement.

NOTE: Park a car or have a person stand on the cover when removing the mustache-(A). until the mustache is replaced.



**IMPORTANT:**

△ - STANDARD ON ALL CAST IRON RINGS: 4 CAST-IN TABS WITH 1/2" HOLE TO TIE RE-BAR TO CONCRETE. (NOT INCLUDED)

