

# Instructions For Replacing The E/Z Lift Cover

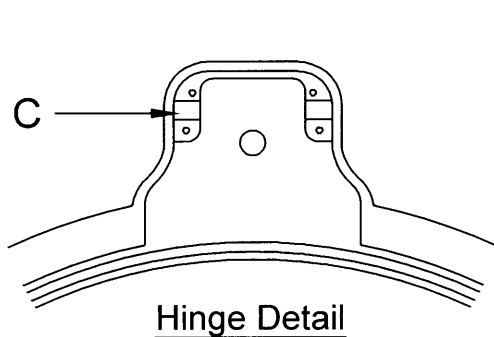


Fig. 1

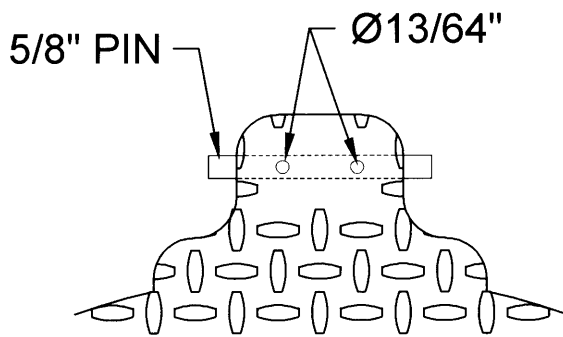
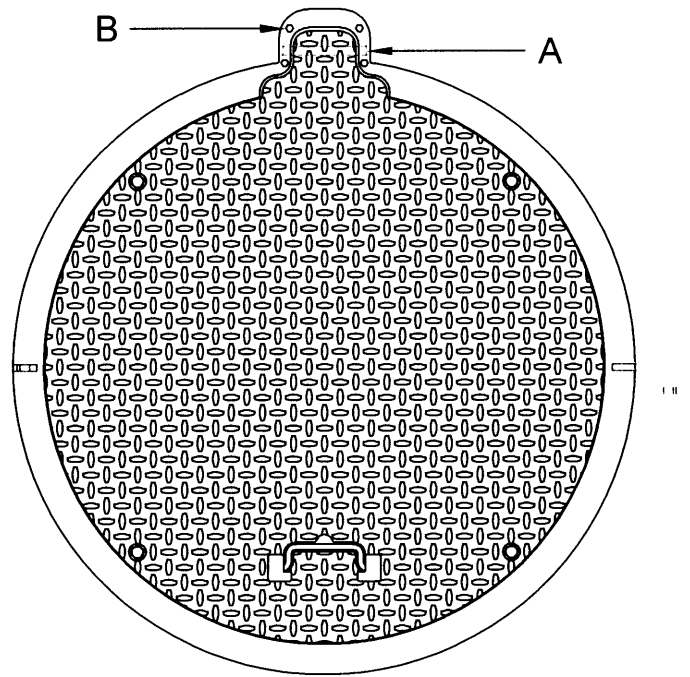


Fig. 2



#### TOOLS REQUIRED

1. 5/16"-16 TRANSFER PUNCHES
2. 13/64" DRILLS
3. 1/4"-20 TAP
4. MIG WELDING WIRE  
TYPE: ER70S-6

### TO REPLACE THE E/Z LIFT COVER, YOU MUST DO THE FOLLOWING STEPS:

1. We need the size of the hinge pin-(A).
2. The pin is shipped separate.
3. Lift the cover and remove the gas shock.
4. Lower the cover and remove the four allen screws-(B), holding down the mustache.
5. After removing the existing cover, lay the pin in the hinge slot-(C) (See Figure 1).
6. Lay the cover down, using wood splinters, put in between cover and ring to hold cover centered.
7. Drill two, 13/64" holes thru the cover and pin-(A) to hold the pin in the correct position (See Figure 2). **USE ONLY A PNEUMATIC OR LOW VOLTAGE DRILL.**
8. Leave the drill in one hole and tap the other with a 1/4"-20 tap, included with the kit.
9. Screw in the flat head screws included in the kit.
10. Lift the cover and carry away from explosion prone area and weld.
11. Use Anti-Seize compound in the hinge slot-(C) area (See Figure 1).
12. Now reverse steps #4 then #3 to put cover back on.