



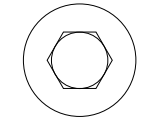
CNI'S POSITION OF CAM-LOK INSTALLATION INSTRUCTIONS

MAKE SURE BEFORE TIGHTENING, THAT THE CAM-LOK IS FACING IN THE RIGHT DIRECTION. ALSO, THAT THE CAM-LOK BOLT IS TURNED UNTIL IT BOTTOMS OUT ON THE WELDED WASHER.

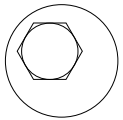
USE A 3/8" DRIVE RATCHET TO LOCK OR UNLOCK COVER. DO NOT APPLY MORE THAN 40 LBS. OF TORQUE

NOTE: BEFORE REPLACING THE COVER MAKE SURE ALL THE CAM-LOKS ARE FACING IN THE RIGHT DIRECTION

HEX HEAD BOLT MUST BE IN THE CENTER OF THE BOLT HOLE.



CORRECT

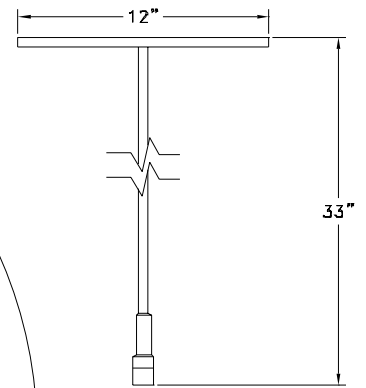


INCORRECT

SEE FIG. 1 FOR CORRECT ANGLE POSITION

RIGHT DIRECTION

SOCKET T-WRENCH TO FIT ALL MANHOLES
P/N #285 NET PRICE: \$10.99



WRONG DIRECTION

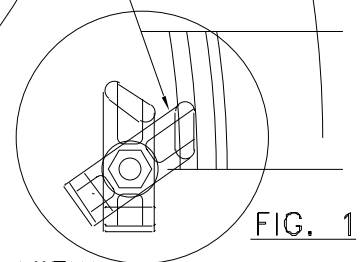
OPEN POSITION

TOP VIEW

TIGHTEN

LOOSEN

CORRECT ANGLE POSITIONING WHEN LOCKED

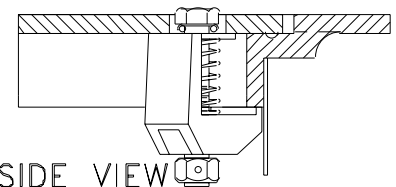


TOP VIEW

LOCKED POSITION

USE ANTI-SEIZE COMPOUND AT LEAST ONCE A YEAR, ON ALL THREADED AREAS.

SQUAT DOWN ON CENTER OF COVER OR ORDER P/N. #285 AND BEGIN TO TIGHTEN CAM-LOKS. ALWAYS TIGHTEN CAM-LOKS IN A NUMERICAL ORDER. ON THE E/Z LIFT MANHOLES ALWAYS BEGIN OPPOSITE TO THE HINGE. GRADUALLY TIGHTEN CAM-LOKS ALTERNATING AS SHOWN ABOVE.



SIDE VIEW