

SECTION A-A

SPECIFICATIONS

- **COVER:** 3/8" Diamond Floor Plate W/ Lift Handle
- **SKIRT:** 14 Gauge, Galvanized Steel Sheet Metal
- **GASKET:** 3/8" x 1/2" Low swell, Buna N rubber
- **Load Rating:** H-20
- **Inner Clearance:** 34.56" Cylindrical Working Area
- **Projected Weight:** 270.1 LBS

Disclaimer: All dimension can differ up to ± 0.25 in

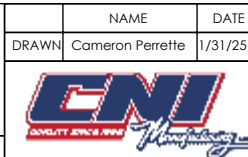
1	Lift Handle
2	Gas Shock
3	Cam Loks
4	Safety Bar
5	H2O Bracing
6	Gasket

PROPRIETARY AND CONFIDENTIAL
THE INFORMATION CONTAINED IN THIS DRAWING IS THE SOLE PROPERTY OF CNI MANUFACTURING. ANY REPRODUCTION IN PART OR AS A WHOLE WITHOUT THE WRITTEN PERMISSION OF CNI MANUFACTURING IS PROHIBITED.

CNI MANUFACTURING

15627 ARROW HIGHWAY, IRVINDALE CA, 91706
(626) 962-6646 FAX: (626) 962-4854
WEB SITE: WWW.CNI-MFG.COM EMAIL: INFO@CNI-MFG.COM

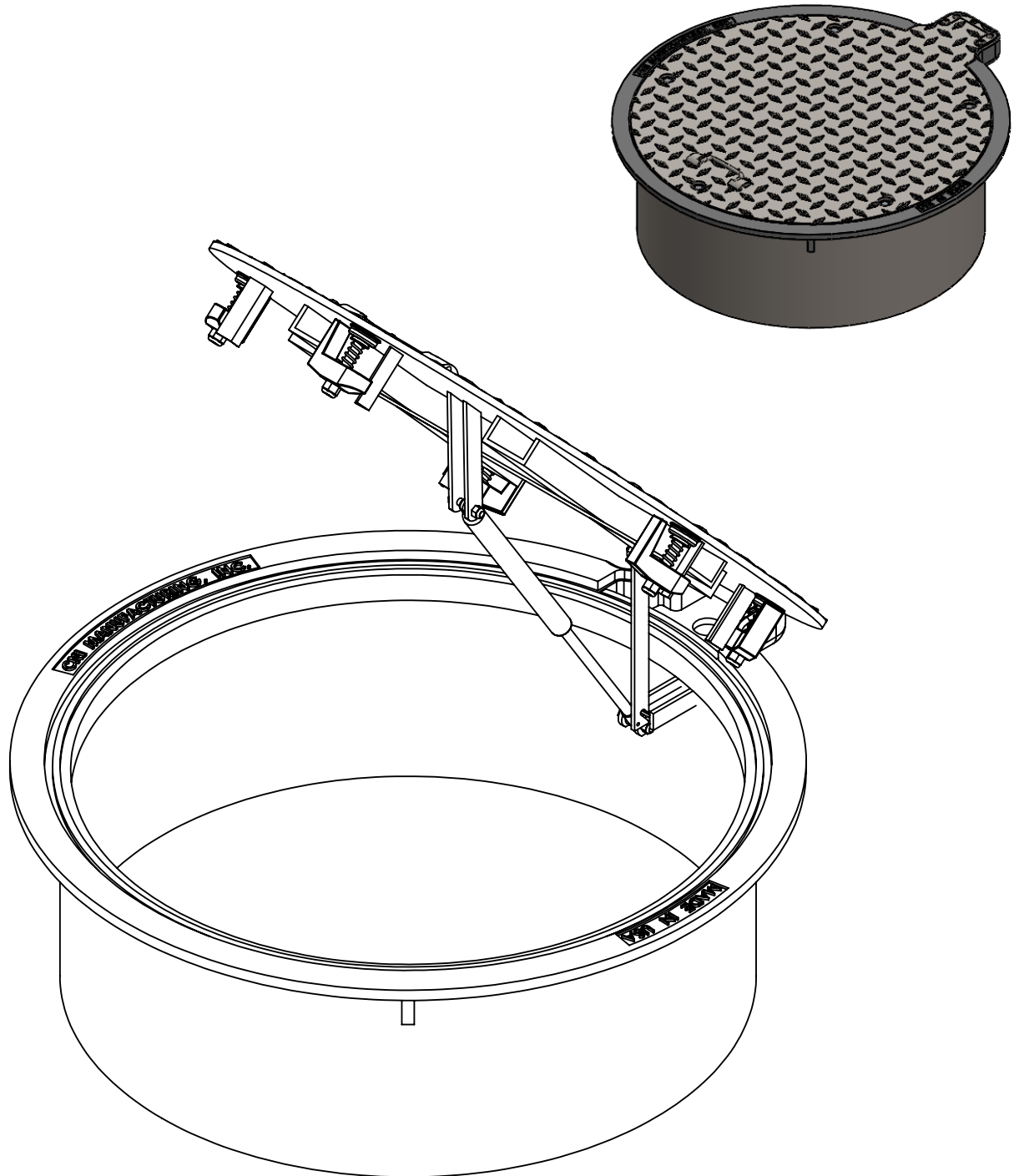
DO NOT SCALE DRAWING



DRAWING NAME		36" EZ-LIFT MANHOLE WITH CAM-LOKS	
SIZE	PART. NO.	REV.	
A	7045		
SCALE: 1:16		SHEET 1 OF 2	

2

1

**PROPRIETARY AND CONFIDENTIAL**

THE INFORMATION CONTAINED IN THIS DRAWING IS THE SOLE PROPERTY OF CNI MANUFACTURING. ANY REPRODUCTION IN PART OR AS A WHOLE WITHOUT THE WRITTEN PERMISSION OF CNI MANUFACTURING IS PROHIBITED.

CNI MANUFACTURING

15627 ARROW HIGHWAY, IRVINDALE CA, 91706
(626)962-6646 · FAX: (626)962-4854
WEB SITE: WWW.CNI-MFG.COM · EMAIL: INFO@CNI-MFG.COM

DO NOT SCALE DRAWING

NAME	DATE
DRAWN: Cameron Perrette	1/31/25

**DRAWING NAME**

**36" EZ-LIFT MANHOLE WITH
CAM-LOKS: Open**

SIZE	PART. NO.	REV.
A	7045	

SCALE: 1:16 SHEET 2 OF 2

2

1